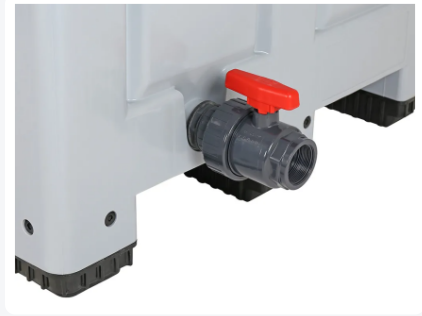


Article number: 1612251.K



2" check tap for plastic pallet boxes - installation on the short side of a pallet box



Product specifications

Weight (kg)	0,84 kg
External dimensions (l x w x h)	120 x 110 x 155 mm
Color	Grey
Material	PVC

Features

Ball valve may be screwed into Big Box pallet boxes using threaded end (tap thread first).

The ball valve has a 2" dispensing outlet.

Geschikte accessoires

