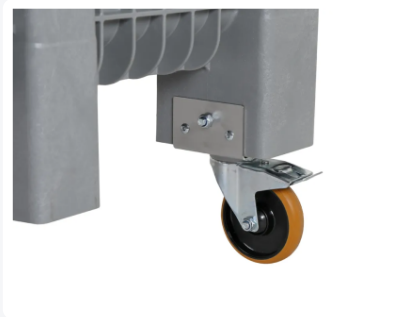




# CB3 High plastic palletbox - 1200 x 1000 mm - 4 wheels - grey



## Product specifications

Uitwendig (LxBxH)	1200 x 1000 x 1295 mm
Inwendig (LxBxH)	1110 x 897 x 983 mm
Capacity	1000 liter
Sidewalls	Closed, reinforced
Material	HDPE
Article number	83271890.ZW
Weight (kg)	47 kg
Temperature range	-30°C to +40°C
Color	Grey
Bottom	Closed, reinforced
Max. load capacity per box	750 kg

## Features

**Grey mobile plastic pallet box**

**Dimensions: 1200 x 1000 x H 1295 mm**

**Capacity: 1000 liters**

**Type: CB3 High**

**Suitable for food**

**Equipped with 4 galvanized swivel wheels**

**Mobile and easy to move**

**Hygienic design suitable for use in the food industry**

**Large volume of 1000 liters provides ample storage options**

## Description

Mobile pallet box type CB3 High in dimensions of 1200 x 1000 mm, equipped with hygienically smooth inner walls. The grey box is highly suitable for use in the food industry. The CB3 High is produced in one piece and is mounted on 4 galvanized swivel wheels, 2 of which are with brakes. Breakage in sensitive areas is thus minimized. The CB3 High pallet box is stable, impact-resistant, and has a low weight; almost 10 kilograms lighter than comparable heavy-duty boxes. The pallet box is made of high-quality foamed HDPE plastic, giving the CB3 High extremely high impact resistance. The grey CB3 High can also be easily equipped with transponders for tracking and tracing of the box and cargo. The CB3 High pallet boxes are equipped with a 1" outlet on one short side and a 2" outlet on one long side.



## Geschikte accessoires



## Alternatieve artikelen

