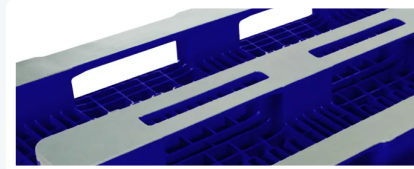
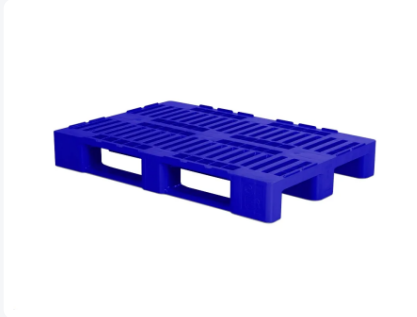




Euro pallet - H1 - 1200 x 800 mm - Blue (with rims - without centring ridges)



Product specifications

Uitwendig (LxBxH)	1200 x 800 x 160 mm
Dynamic load capacity	1250 kg kg
Material	HDPE
Article number	83100341
Weight (kg)	18 kg
Temperature range	-30°C to +40°C, briefly up to +90°C
Color	Blue
Static load capacity	5000 kg kg
Edge height	7 mm mm
Load capacity in racks	1000 kg

Features

The H2 pallet (800 x 600 mm) centres on the H1 pallet

Raised rims around the H1 prevent the load sliding off and mutual sliding of empty pallets

H1 is extra strong due to oblique connection between the runners and the chocks

Description

The well-known plastic pallet measuring 1200 x 800 mm and a height of 160 mm, but in a blue color. The blue color is an approximation of RAL 5002. The blue Euro H1 pallet is equipped with grey welded pallet runners and blocks, preventing dirt from entering. The pallet deck of the blue H1 has a surrounding edge of 7 mm high. The H1 has a fixed tare weight of 18 kg. This makes the H1 suitable for use in automatic systems, for accurately weighing the load, and for interchanging within a pool system. The vulnerable parts of the Euro H1 pallet are reinforced. The H1 has extra heavy runners and a reinforced, inclined transition from the pallet runners to the blocks. This minimizes the risk of breakage. The Euro pallet has a temperature resistance from -30°C to +40°C / briefly up to +90°C and is easy to clean. H1 Euro pallets have a long service life, even with intensive use.

Alternatieve artikelen

