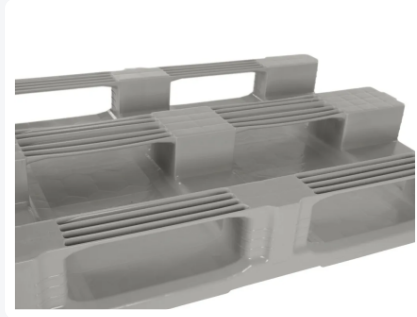
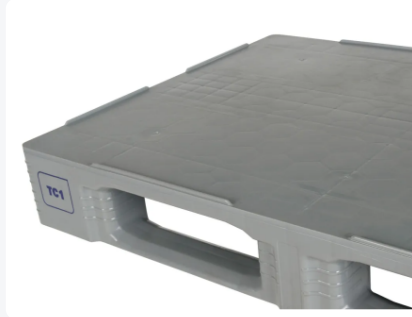




Euro pallet - TC1 - 1200 x 800 mm (with rims)



Product specifications

Uitwendig (LxBxH)	1200 x 800 x 160 mm
Dynamic load capacity	1500 kg kg
Material	HDPE
Article number	87065881
Weight (kg)	18 kg
Temperature range	-30°C to +40°C, briefly up to +90°C
Color	Grey
European Article Number	7424915316392
Static load capacity	7500 kg kg
Edge height	7 mm mm
Load capacity in racks	1000 kg

Features

Connections of the pallet chocks to the runners and the pallet surface are extra reinforced. Breakage at these sensitive points is thus reduced to a minimum

Top and bottom pallet surface are completely smooth and unperforated without external rib structures

Intelligent design of the pallet chock ensures better grip of wrapping and stretch film

Raised rims around the TC1 prevent the load sliding off and mutual sliding of empty pallets

TC1 runners are chamfered on both edges

The TC pallet's patented weld geometry guarantees a high load capacity and long lifetime

Very high load capacity that is upgradable to 1750 kg in pallet racks using reinforcing sections: on request

Description

Europallet in size 1200 x 800 mm with a height of 160 mm. Made from food-grade plastic. The pallet is completely smooth and hygienic, making it extremely suitable for food handling. With 3 pallet runners lengthwise and raised edges all around (7 mm) on the pallet deck. The raised edges prevent goods from sliding off and empty pallets from sliding against each other. The bottom of the blocks is closed, and the runners are equipped with reinforcement ribs. The top and bottom of the pallet deck are completely smooth and closed without external rib structures. The transitions from the pallet blocks to the pallet runners and to the pallet deck are extra reinforced, minimizing breakage at these sensitive points.

Alternatieve artikelen